

PLANTS

# COMPLEMENTARY PRODUCTS FOR THE ASPHALT PRODUCTION

BITUMEN PROCESSING-, STORAGE-  
AND HEATING SYSTEMS



**AMMANN**

# MODITEK

## HIGH CAPACITY POLYMER MODIFIED BITUMEN PLANT

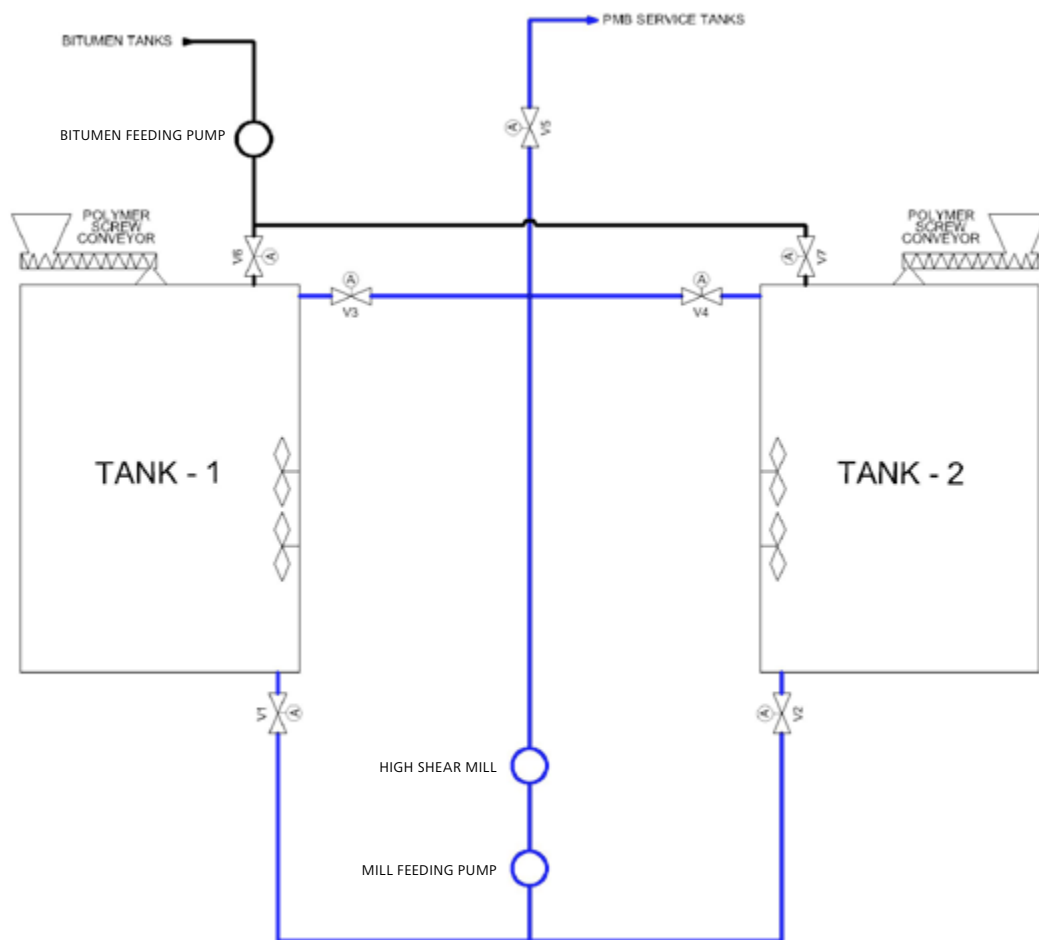
The ModiTEK is a fully automatic, easily transportable polymer modified bitumen plant. With a capacity up to 30 t/h, the ModiTEK is the perfect match for all markets. The plant offers full flexibility with different mix designs and recipes.

### HIGHLIGHTS

- Up to 30 t/h capacity
- High shear mill with gap adjustment
- Fully automated controls and reporting by SCADA based software over PLC
- Remote customer service via Internet
- Flexibility for different mix designs and recipes
- Easily transportable, fits into container
- Polymer feeding with screw conveyor or silo

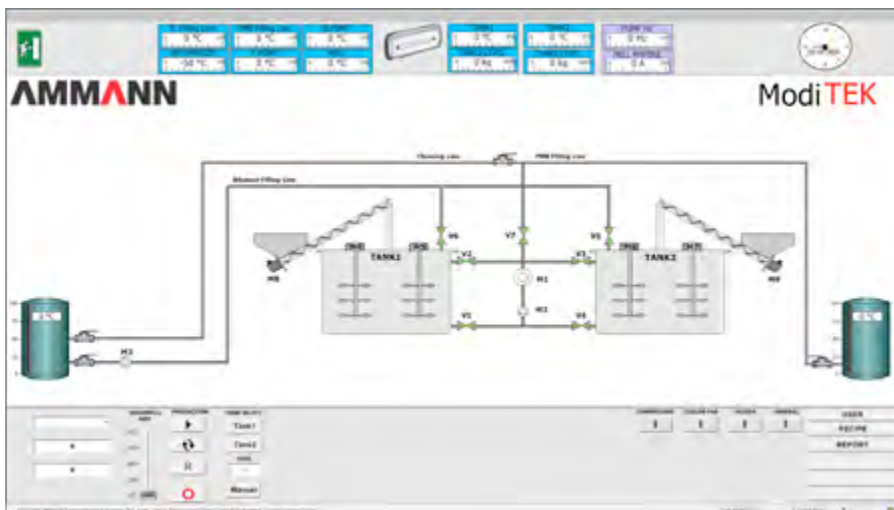
**“For contractors of highways, bridges, airports, viaducts and dense traffic roads.”**





## POLYMER MODIFIED BITUMEN; IS USED WHEREVER EXTRA PERFORMANCE AND DURABILITY ARE DESIRED

- Provides high skid resistance
- Reduces noise levels
- Improves performance under heavy traffic conditions
- Delays cracking and reflective cracking
- Increases fatigue life
- Durable in extreme climatic conditions and high rainfall regions
- Rutting resistance
- Prevents from thermal cracking and stripping
- Provides resistance to rapid temperature changes
- Optimizes maintenance costs



Pneumatic system



High shear mill



Loadcell system

## TECHNICAL DATA MODITEK

HIGH SHEAR MILL – 1500 RPM. SOFT STARTER CONTROLLED

HEATED TANKS ON LOAD CELL WEIGHING SYSTEMS

GRAPHITE BASED SOFT SEALS FOR MILL WITH WATER COOLING SYSTEM

INVERTER CONTROLLED MILL FEEDING PUMP WITH 50 M<sup>3</sup>/H CAPACITY

PNEUMATIC VALVES IN ALL PIPING

7 M<sup>3</sup> BATCH TANK CAPACITY WITH 60MM ROCK-WOOL INSULATION,  
HEATING LINES AND DUAL AGITATORS

TOUCH SCREEN MONITOR FOR FULL AUTOMATIC OPERATION

STATISTICAL DATA REPORTING AND ARCHIVING

## OPTIONS

ELECTRICAL OR THERMAL OIL HEATING

SCREW CONVEYORS ON LOAD CELLS

10 M<sup>3</sup> BIG BAG POLYMER SILO WITH SCREW CONVEYORS ON LOAD CELLS

SEPARATE CONTROL CABIN

AS1 COMPUTER INTEGRATION



# EMULTEK 15

## HIGH CAPACITY EMULSION PLANT

The EmulTEK 15 is the perfect solution for big projects. The bitumen emulsion plant offers top flexibility with different mix designs and recipes. Its compact dimensions make the EmulTEK 15 easy to transport to different job-sites.

### USAGE OF EMULSIFIED BITUMEN

- Tack coat between binder and wearing courses
- Prime coat
- Surface dressing
- Slurry seal
- Micro surfacing

### HIGHLIGHTS

- Up to 15 t/h capacity
- Fully automated control and reporting system by SCADA based software over PLC
- Flexibility for different mix designs and recipes
- Hot water inlet
- Automatic cleaning system
- Remote customer service via internet
- Easily transportable, suitable for container



## TECHNICAL DATA EMULTEK 15

SEMI-AUTO OR AUTOMATIC OPERATION POSSIBILITIES

COLLOIDAL MILL

STAINLESS STEEL PREMIX TANKS ON LOAD CELLS

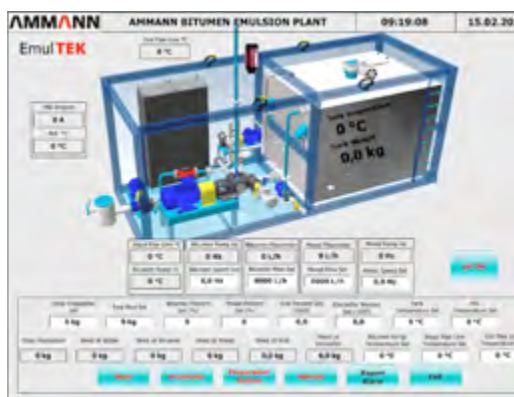
HEATING LINES FOR RAPID HEATING OF WATER

STAINLESS STEEL PUMP AND FLOW METER

BITUMEN FLOW METER WITH HEATED BODY

BARREL PUMP FOR ADDITIONAL SAFETY

TOUCH SCREEN MONITOR



## OPTIONS

ELECTRICAL OR THERMAL OIL HEATING

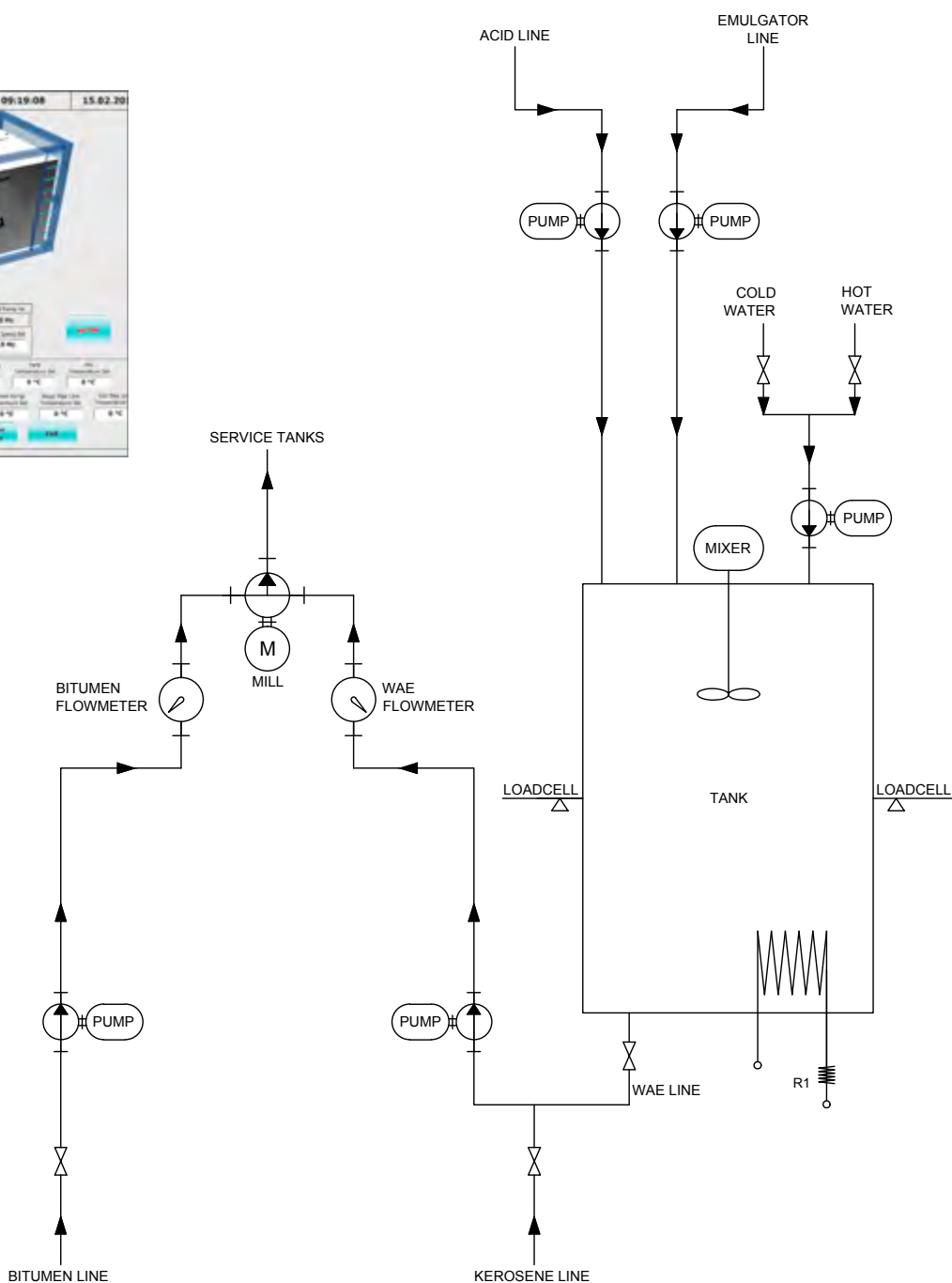
ADDITIONAL KEROSENE / DIESEL FEEDING LINE

SEPARATE CONTROL CABIN

ADDITIONAL ADDITIVE LINES

IN LINE PRODUCTION

AUTOMATIC PH MEASURING



# EMULTEK 4

## FLEXIBLE EMULSION PRODUCTION AT EVERY JOBSITE

With its compact design and simple process, EmulTEK 4 is the perfect solution for different jobsites. The system is easy to transport and offers many solutions to the different emulsion needs.

### USAGE OF EMULSIFIED BITUMEN

- Tack coat between binder and wearing courses
- Prime coat
- Surface dressing
- Slurry seal
- Micro surfacing

### HIGHLIGHTS

- Up to 4 t/h capacity
- Semi-automated control and reporting system by SCADA based software over PLC
- Colloidal mill
- Flexibility for different mix designs and recipes
- Easily transportable, suitable for container
- Hot water inlet



Bitumen flow meter



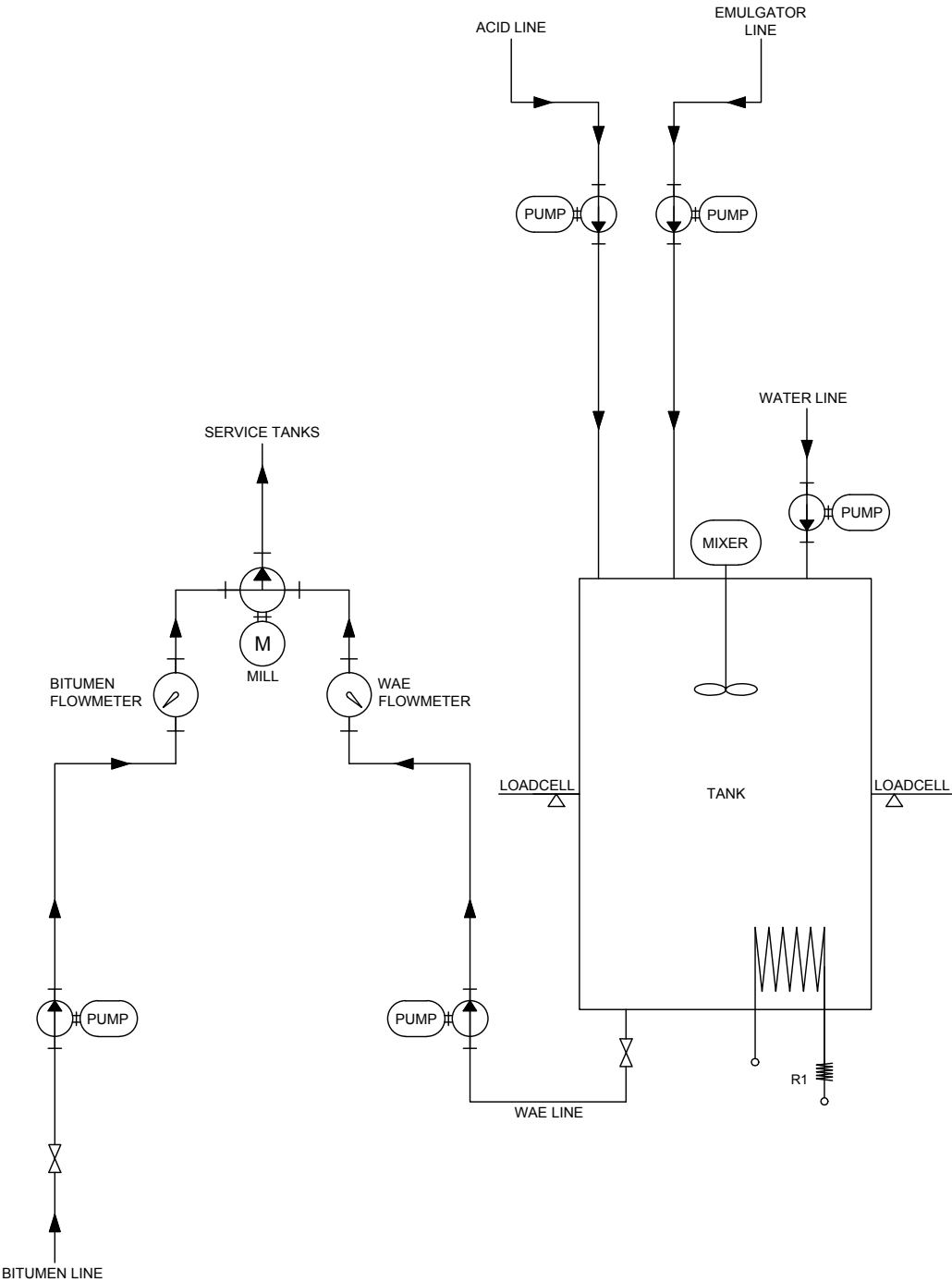
Bitumen – WAE mixing

# TECHNICAL DATA EMULTEK 4

- STAINLESS STEEL PREMIX TANK ON LOAD CELLS
- HEATING LINES FOR RAPID WATER HEATING
- STAINLESS STEEL WAE PUMP AND FLOW METER
- BITUMEN FLOW METER WITH HEATED BODY
- BARREL PUMP FOR ADDITIONAL SAFETY

# OPTIONS

- ELECTRICAL OR THERMAL OIL HEATING
- ADDITIONAL KEROSENE / DIESEL FEEDING LINE
- ADDITIONAL ADDITIVE LINES
- AUTOMATIC PH MEASURING



# HEATTEK

## THERMAL OIL HEATING SYSTEM

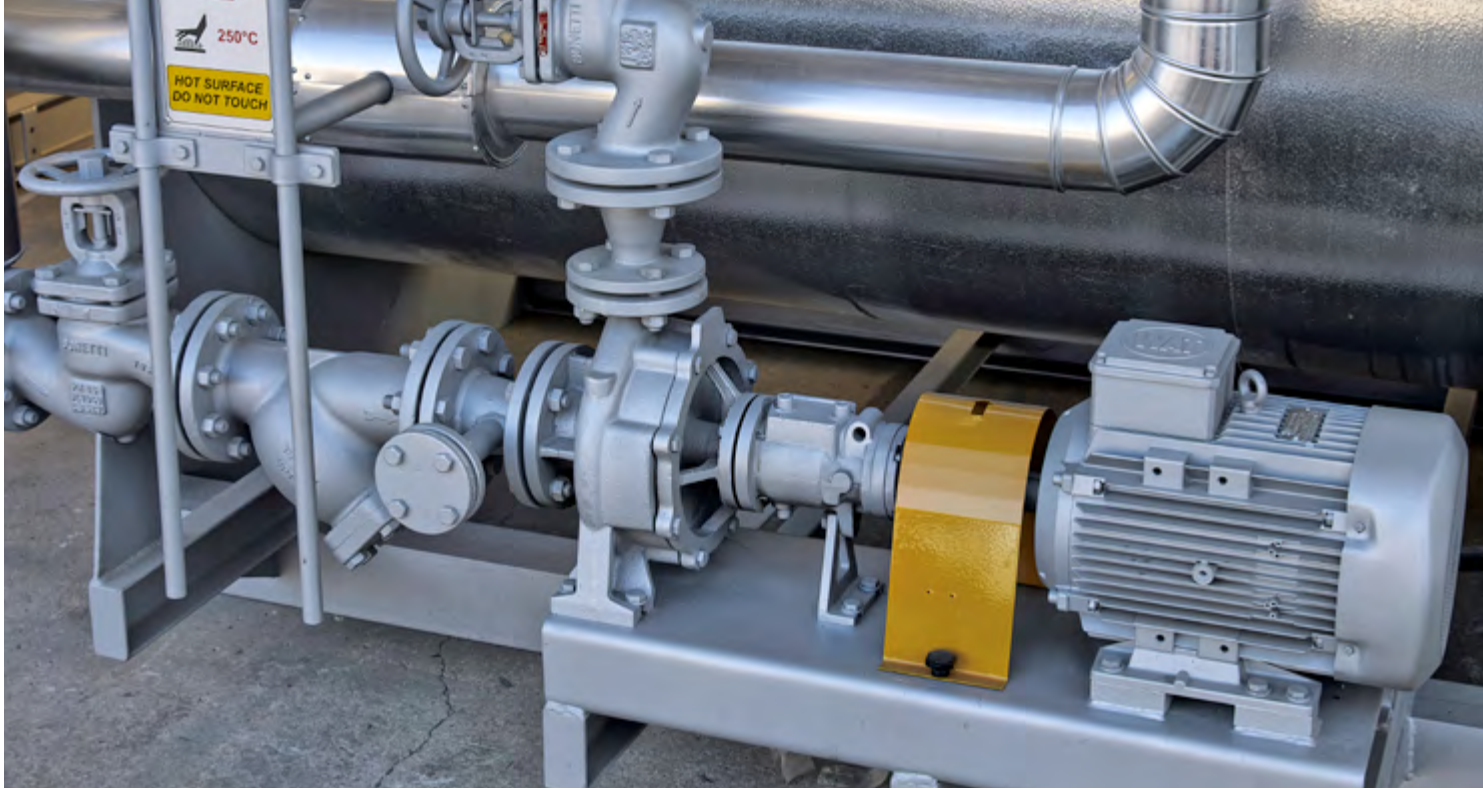
The HeatTEK system is the fastest solution to generate heat for bitumen handling. The intelligent system is the perfect solution for all customers who have easier access to different fuel types than electricity.

### HIGHLIGHTS

- From 200 000 kcal/h to 2 000 000 kcal/h capacity
- Double line, double pipe heating coil
- Suitable with burner for all fuel types
- Complete system with expansion tank and circulation pumps
- High pressure switches for increased safety

“For customers who have easier access to different fuel types than electricity.”





Hot oil circulation pump



Safety system

# DRUMTEK

## HIGHLY EFFICIENT DRUM MELTING SYSTEM

With two different models, DrumTEK offers high capacity bitumen melting technology. It is the perfect solution for customers who have easier access to bitumen supply in drums.

### ADVANTAGE

- Enabling diversity for bitumen supply
- Enabling to stock bitumen during low season

### HIGHLIGHTS

- Up to 10 t/h melting capacity
- Hydraulic barrel lifting mechanism
- Barrel chambers with dedicated thermic oil lines
- Bottom reservoir for bitumen storage
- Easy transportation, fits into container

### TECHNICAL DATA DRUMTEK

DIFFERENT MODELS WITH 26–30 BARREL CAPACITY

12 TONS BITUMEN STORAGE WITH HEATING LINES

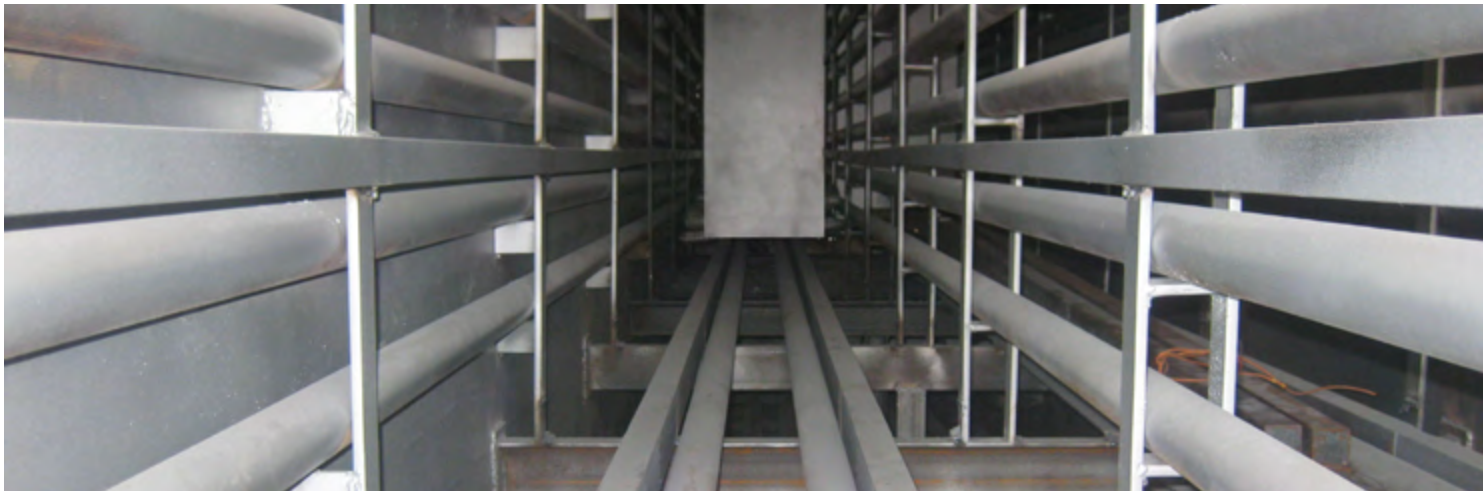
60 MM ROCK WOOL INSULATION COVERS THE ENTIRE BODY

50 M<sup>3</sup> BITUMEN DISCHARGE PUMP

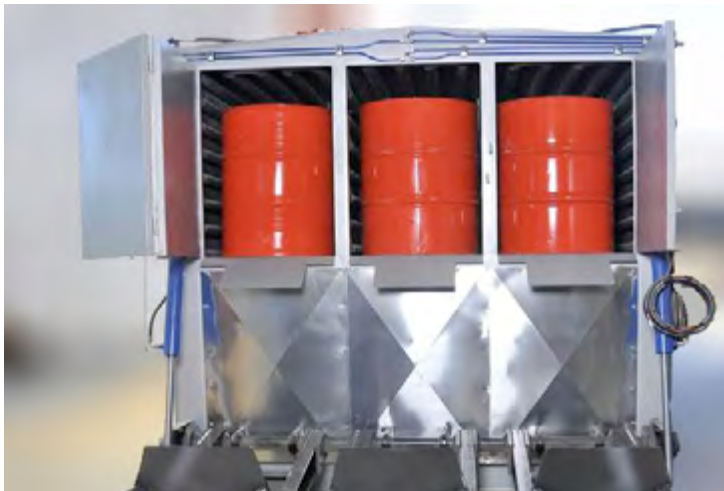




Inner view



Heating lines



Drum loading



Lifting mechanism

# MOBILE BITUMEN TANK

THE BEST SOLUTION FOR FAST MOVING CUSTOMERS



## HIGHLIGHTS

- 30 to 80 m<sup>3</sup> capacity
- Insulation up to 200 mm
- Overflow protection with level sensor

## OPTIONS

ELECTRICAL OR THERMIC OIL HEATING

DIRECT HEATING

COMBINATION WITH DIESEL AND HEAVY OIL TANKS

CIRCULATION FOR PMB AND EMULSION

MULTIPLE SECTIONS FOR DIFFERENT TYPES OF PRODUCTS

# MECHTEK

SUB BASE PRODUCTION AT ITS BEST



## HIGHLIGHTS

- Up to 800 t/h capacity
- Wear resistant mixer
- Full automatic operation with SCADA based software
- Configurable additive systems

## OPTIONS

CEMENT, EMULSION OR FOAM ADDITIVE SYSTEMS

DOSING SYSTEM ON LOAD CELLS

HARDOX / AMDURIT PROTECTION

# BITUTAINER – CONTAINERIZED BITUMEN TANK

LOWEST TRANSPORTATION COST FOR BITUMEN STORAGE AND HANDLING



## HIGHLIGHTS

- Save transport costs in international and local projects with convenience in transport
- Strong and durable body for impacts during relocation
- Opportunity to put one on top of each other and stockpiling
- Low erection cost. No need for steel foundations, anchorage, slope wall

## OPTIONS

ELECTRICAL OR THERMAL OIL HEATING

CIRCULATION FOR PMB AND EMULSION

For additional product information  
and services please visit:  
**[www.ammann-group.com](http://www.ammann-group.com)**

